

ASME CERTIFICATION

At Blentech, we understand that reliability and compliance are critical for your food processing operations. That's why we adhere to the rigorous standards of the American Society of Mechanical Engineers (ASME) for the construction of our pressure vessels. We also offer compliance with Special Equipment Licensing Office (SELO), Pressure Equipment Directive (PED), and Technical Standards and Safety Authority (TSSA) pressure vessel standards. This commitment to quality ensures that your equipment is not only built to the highest standards but also meets all regulatory requirements, providing you with peace of mind and exceptional performance.

OUR ASME VESSEL CONSTRUCTION PROCESS: A COMMITMENT TO QUALITY

1. Detailed Design and Planning:

- We begin with a thorough understanding of your specific needs and requirements. Our engineering team meticulously designs each vessel to meet ASME U, UM, or R stamp specifications.
- Benefit to You: Custom-engineered solutions tailored to your unique process, ensuring optimal efficiency and product quality.

2. Certified Materials and Sourcing:

- We use only ASME-approved materials, sourced from verified suppliers. All material is inspected and verified upon arrival, with complete material test reports (MTRs) tracked and documented.
- Benefit to You: High-quality, traceable materials that guarantee durability and longevity of your equipment.

3. Precision Welding by Certified Welders:

- Our welders are ASME-certified and follow strict, documented welding procedures. Each weld is meticulously performed and tracked, with detailed records of who performed each weld.
- Benefit to You: Superior weld integrity and structural strength, reducing the risk of leaks or failures and ensuring safe operation.

4. Rigorous Inspection and Quality Control:

- Throughout the construction process, we conduct multiple inspections and hold points, including those by authorized inspectors (AIs). Calibration of all measuring equipment is maintained and documented.
- Benefit to You: Comprehensive quality assurance at every stage, guaranteeing that your vessel meets all ASME code requirements and performs flawlessly.

5. Complete Documentation and Traceability:

- We maintain detailed records of every step, including material certifications, welding procedures, welder qualifications, and inspection reports. This documentation ensures full traceability and compliance.
- Benefit to You: Complete transparency and accountability, providing you with confidence in the quality and integrity of your equipment.

ENGINEERED FOR EXCELLENCE. BUILT TO LAST.



BLENDING TECHNOLOGY WITH SIMPLICITY

2899 DOWD DRIVE, SANTA ROSA CA 95407 | T: 707.523.5949 | BLENTECH.COM





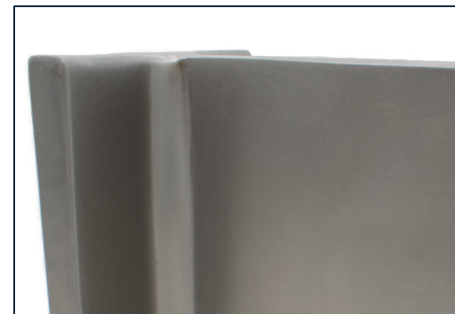
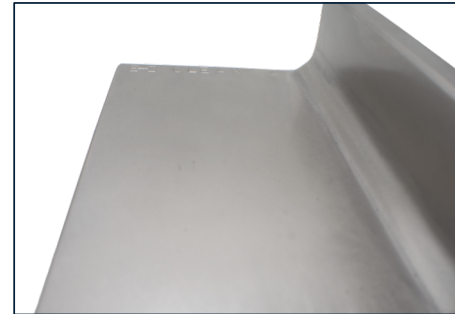
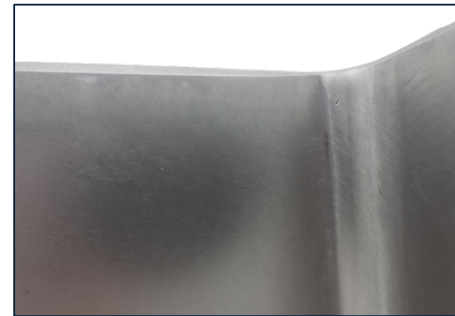
WHY CHOOSE BLENTECH ASME VESSELS?

- **Regulatory Compliance:** Our ASME-stamped vessels meet all relevant industry standards, avoiding costly delays and penalties.
- **Enhanced Safety:** Rigorous construction and inspection processes minimize risks and ensure the safe operation of your equipment.
- **Increased Durability:** High-quality materials and expert craftsmanship result in equipment that lasts longer and performs reliably.
- **Reduced Downtime:** Robust construction and thorough testing minimize the likelihood of failures and unplanned maintenance.
- **Superior Food Safety:** High-quality construction minimizes the risk of mechanical failures, reducing the potential for contamination and foreign material in your final product.
- **Peace of Mind:** Knowing your equipment is built to the highest standards allows you to focus on your core business.

YOUR TRUSTED PARTNER FOR HIGH-QUALITY FOOD PROCESSING EQUIPMENT

We are committed to providing our customers with the best possible solutions, built to the highest standards. Our ASME vessel construction process is just one example of our dedication to quality, reliability, and customer satisfaction.

CONTACT US TODAY.



BLENDING TECHNOLOGY WITH SIMPLICITY

2899 DOWD DRIVE, SANTA ROSA CA 95407 | T: 707.523.5949 | BLENTECH.COM | F: 707.523.5939

