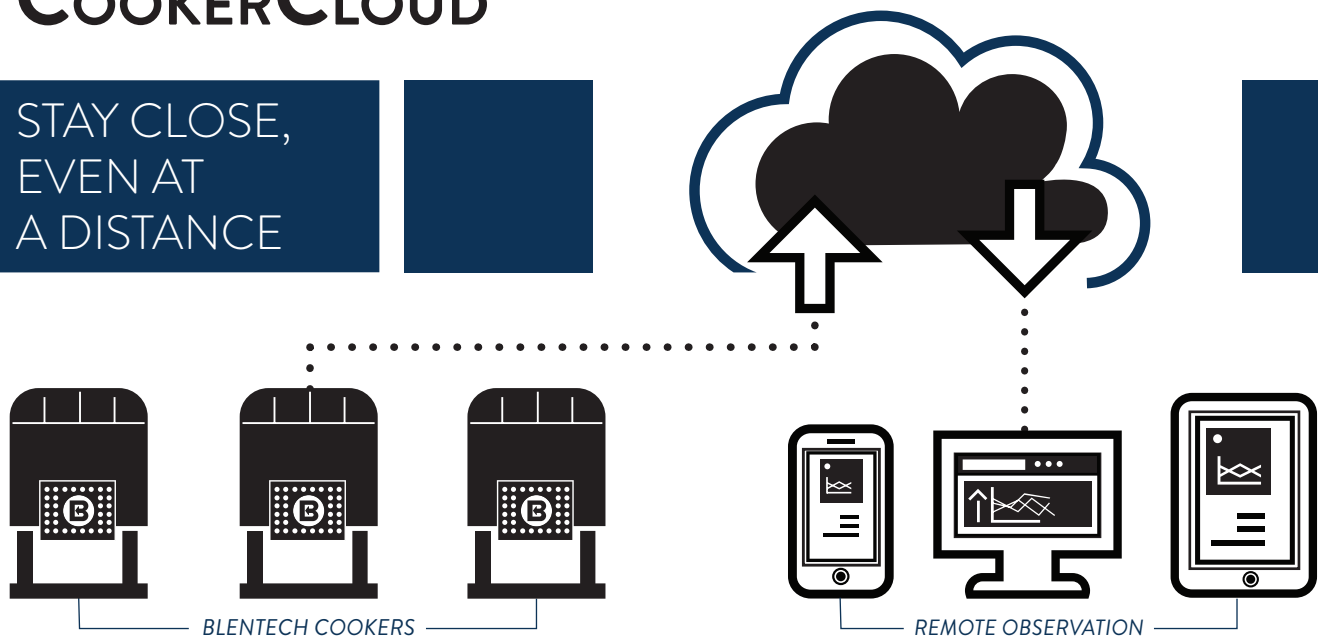


COOKERCloud™

STAY CLOSE,
EVEN AT
A DISTANCE



THE BLENTECH COOKERCloud™ IS A COST EFFECTIVE CLOUD BASED HISTORIAN THAT REMOTELY MONITORS AND COLLECTS SECURE DATA FROM FOOD AND BEVERAGE OPERATIONS.



ASSURANCE

- No matter where you are, have confidence that your production is performing.
- Delivers secure data to allow you to remotely monitor productivity and performance.



AGILITY

- With the secure data at your fingertips, you can turn the reactive into proactive.
- Resolve current issues and discover underlying problems.



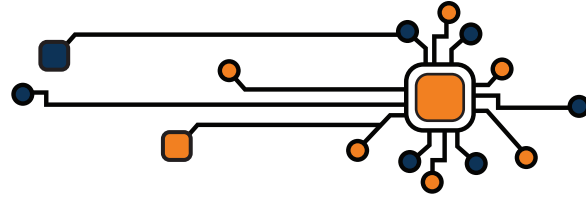
ACCESSIBILITY

- Improving coordination of troubleshooting speed with real-time information.
- Expedites the process of fixing a problem from anywhere.

BENEFITS

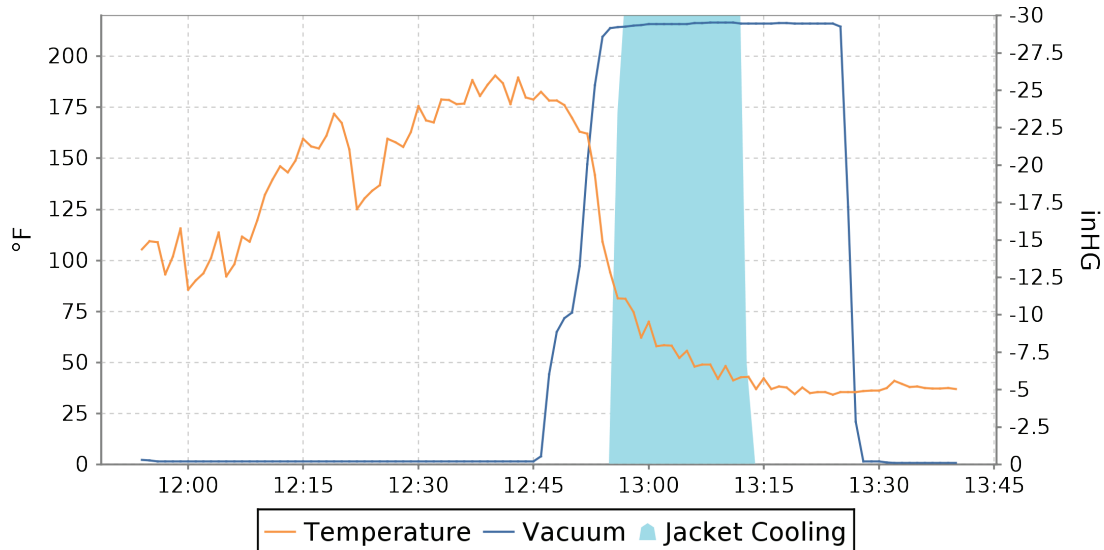
- Simple to use
- Cost effective
- Fully managed
- Performance optimized
- Easy export of data
- Secure data protection practices
- Backs up data if connection is lost

STAY CLOSE,
EVEN
AT A DISTANCE



WHILE THE TECHNOLOGY DEVELOPED TO MONITOR INDUSTRIAL PROCESSES HAS BEEN WIDELY AVAILABLE FOR YEARS, IT HAS BEEN RESERVED FOR ONLY THE HIGHEST END CUSTOMERS, UNTIL NOW.

Technology has been developed to monitor industrial cooking processes for years; however, it has been reserved for only the highest end customers – until now. The Blentech CookerCloud™ is a system to remotely collect data from our customer's operations to aid them with reducing downtime, improving production efficiency and remote record keeping. Blentech knows the cost to your company when production equipment is unavailable. Or the huge advantage of being able to squeeze in 15% more production out of your equipment via the efficient use of its capabilities. The CookerCloud™ leverages the latest secure IIoT ("Industrial Internet of Things") to help you with all of these issues providing you with customizable reports through our secure dashboard or sent directly to your laptop or mobile device. Imagine as a Leader you are finally able to get away on a much needed vacation with your family. The CookerCloud™ allows you to stay close, even at a distance. It's simple to use and cost effective. The data is fully managed and easy to export using our confidential data protection practices. It integrates with any PLC/HMI and your data is backed up even if a connection is lost.



"The CookerCloud™ technology not only helps our customers in their production facilities but also during testing. At the BIC, we use the CookerCloud™ to monitor the performance of the machines during a customer test. It helps us provide reliable scale up with secure data that provides meaningful information."

- Jack Sloane, Manager of Blentech Innovation Center ("BIC")



2899 DOWD DRIVE, SANTA ROSA CA 95407
T: 707.523.5949 | BLENTECH.COM | F: 707.523.5939

For full product details please visit us online:

SEARCH: COOKERCLOUD